

ARREVA ADVANTAGE

CONCIERGE GLOBAL TRAVEL MEMBERSHIP



ARREVA

ADVANTAGE



ARREVA ADVANTAGE

COMPREHENSIVE GLOBAL TRAVEL MEMBERSHIP

ARREVA Advantage protects members and families 365 days globally with fewer restrictions compared to consumer options today.

WHAT IS ARREVA ADVANTAGE?

A comprehensive Travel Membership Program designed in collaboration with trusted partners who provide you with a combined 200 years of customer experience in travel assistance, medical transport and insurance benefits. ARREVA provides similar benefits as travel insurance with immediate crisis response and no price shopping plus the robust membership benefits.

WHO IS ARREVA ADVANTAGE FOR?

ARREVA Advantage's annual membership is designed for individuals, families, and other groups on the go. The membership benefits are active all year long every time you are more than 300 miles from home. If any of the below apply to you, ARREVA Advanatge is built to serve you.

- 1. International Traveler
- 2. Domestic Traveler
- 3. Corporate and Personal Traveler

ARREVA ADVANTAGE MEMBERSHIP OFFERINGS



24/7 Travel Assistance



24/7 Medical Assitance



Concierge Services



Optional Quarantine Benefits

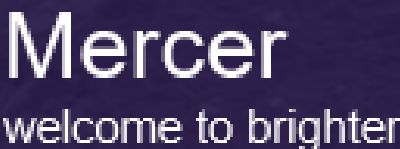
OUR MEMBERSHIPS ARE BACKED BY



30 YEARS



30 YEARS



75 YEARS



103 YEARS

NO AGE BIASES



Benefits and Services	<div>ARREVA ADVANTAGE PREMIUM</div> <div>ANNUAL MEMBERSHIP \$1975</div>	<div>ARREVA ADVANTAGE ESSENCE</div> <div>ANNUAL MEMBERSHIP \$1550</div>	<div>ARREVA ADVANTAGE PANDEMIC OPTION</div> <div>ANNUAL MEMBERSHIP \$600</div>
<div>ARREVA ADVANTAGE</div> MEMBERSHIP SERVICES			
24/7 TRAVEL CONCIERGE ASSISTANCE	✓	✓	✓
24/7 MEDICAL CONCIERGE ASSISTANCE	✓	✓	✓
<div>ARREVA ADVANTAGE</div> INSURANCE SERVICES			
PANDEMIC OR EPIDEMIC NON-HOSPITAL EVACUATION	✓		✓
QUARANTINE MID-TRIP CONFINEMENT BENEFIT	✓		✓
OUT-OF-COUNTRY MEDICAL BENEFIT	✓	✓	
EMERGENCY MEDICAL EVACUATION BENEFIT	✓	✓	
REPATRIATION OF REMAINS	✓	✓	
SECURITY EVACUATION	✓	✓	
NATURAL DISASTER EVACUATION	✓	✓	
ACCIDENTAL DEATH BENEFIT	✓	✓	
ACCIDENTAL DISMEMBERMENT BENEFITS	✓	✓	
BAGGAGE DELAY	✓	✓	
TRIP INTERRUPTION BENEFIT	✓	✓	
PERSONAL PROPERTY (STOLEN GOODS)	✓	✓	
EMERGENCY REUNION BENEFIT	✓	✓	
FAMILY REUNION BENEFIT	✓	✓	

ARREVA Advantage is an annual membership that includes:

MEMBERSHIP SERVICES

- 24/7 Travel Concierge Assistance
- 24/7 Medical Concierge Assistance

INSURANCE SERVICES

- Pandemic or Epidemic Non-hospital Evacuation (Ancillary add-on)
- Quarantine Mid-trip Confinement (Ancillary add-on)
- Out-of-country Medical, International Primary Health
- Emergency Medical Evacuation
- Security Evacuation
- Natural Disaster
- Accidental Death and Dismemberment
- Baggage Delays
- Trip Interruption
- Personal Property / Stolen Goods
- Emergency or Family Reunion

SPEED WHEN IT MATTERS MOST

ARREVA Advantage is a direct operator which means there is no price haggling, and we deploy faster and get to members sooner. Especially in medical emergencies, ARREVA deploying faster than anyone else can be the difference between life and death.



NO AGE BIAS

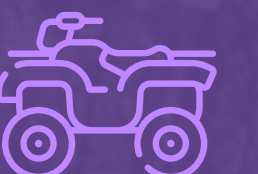
ARREVA'S OUT OF COUNTRY MEDICAL BENEFIT IS FAR MORE ROBUST THAN COMPETITORS

GET TREATED WHERE YOU WANT WITH ARREVA

ARREVA will fly you home or where you need to go, not just the closest medically appropriate facility like most competitors. For example, if you are in Mexico and have a medical emergency, a competitor may transport you to an appropriate hospital in Mexico, or maybe into Texas, but with ARREVA you go where you choose. If you live in NY and want to receive treatment and care at home, ARREVA will fly you to an appropriate NY hospital.



FAR LESS EXCLUSIONS, MOST COMPETITORS WILL EXCLUDE YOU FOR DOING ADVENTUROUS THINGS LIKE RIDING ATVS, ARREVA IS BUILT FOR ADVENTURERS





24/7 GLOBAL TRAVEL ASSISTANCE

- Emergency funds transfer
- Cash transfer assistance
- Legal advice and representation
- Assistance locating the nearest embassy or consulate
- Passport requirements & currency exchange
- Arrangements for last-minute flight and hotel changes
- Luggage locator (reporting/tracking of lost, stolen or delayed baggage)
- Hotel finder and reservations
- Airport transportation
- Rental car reservations and automobile return assistance
- Assistance with lost travel documents or passports
- Emergency message relay service
- Multilingual translation and interpretation services
- Worldwide medical information, up-to-the-minute travel medical advisories, and immunization requirements

24/7 GLOBAL MEDICAL ASSISTANCE

- Locate the nearest suitable medical facility - doctor, medical clinic, dentist, specialist, etc.
- Arrange doctor appointments, ambulance and hospital admissions
- Referrals to local medical and dental service
- Prescription drug replacement
- Replacement of eyeglasses, contact lenses and dental appliances
- Provide medical and non-medical escorts and equipment including portable oxygen
- Arrange for the return of mortal remains
- Return travel assistance for dependent/minor children
- Coordination of travel for visitors to bedside
- Obtain medical reports and hospital records
- Coordinate emergency air ambulance evacuations
- Arrange for the customer's return to their country of residence
- Facilitate guarantee of hospital or medical bills

TRAVEL ASSIST APP FROM WTP

ALERTS

Stay up to date with local and global alerts

TRAVEL

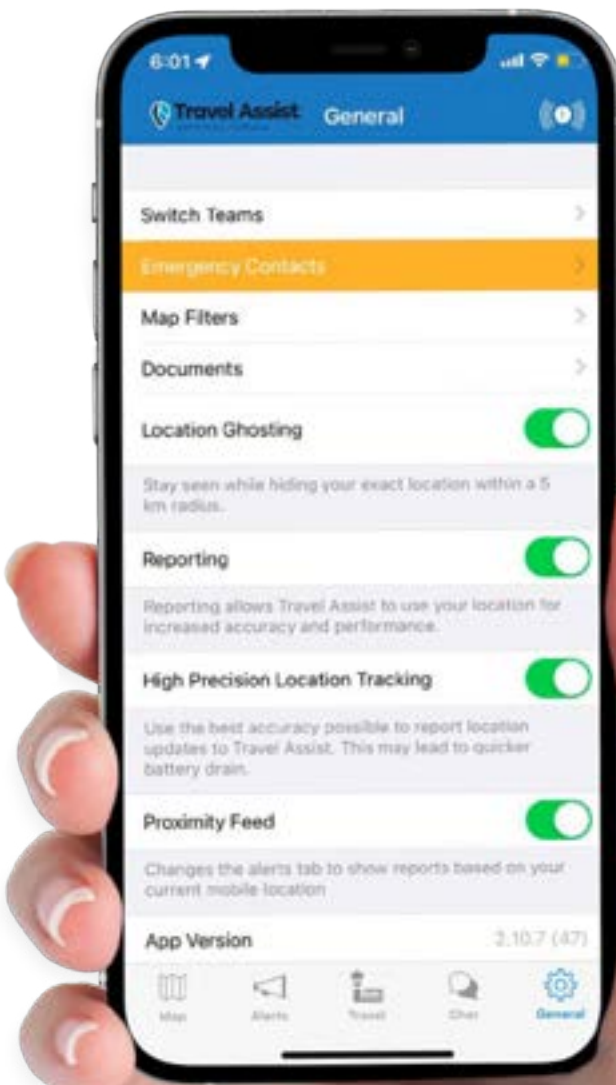
Add places of interest and access country and city intelligence

CHAT

WTP or your organisation's administrator can initiate chat conversation and if you are in a team, you will see all team members' responses.

EMERGENCY

Use the emergency beacon to automatically alert your chosen emergency contacts, your organisation and WTP.



ACCOUNT INFO
JOHN DOE
JDOE@EMAIL.COM

SIGN OUT

ARREVA ADVANTAGE

MEMBERS

PRIMARY JOHN DOE
JANE DOE
JOSEPH DOE

DATES EFFECTIVE

04/21/2022 - 04/21/2023

FOR IMMEDIATE ASSISTANCE CONTACT FOR (EMERGENCY AND NON-EMERGENCY) CALL:
1-833-515-3315 TOLL-FREE WITHIN USA & CANADA
1-416-479-8005 WORLDWIDE COLLECT.





PANDEMIC OR EPIDEMIC NON-HOSPITAL EVACUATION	Up to a maximum of \$250,000 while outside a 300 mile radius of the covered person's permanent place of residence
QUARANTINE MID-TRIP CONFINEMENT BENEFIT	Up to a maximum of \$750 per day for a maximum of 10 days
OUT-OF-COUNTRY MEDICAL BENEFIT	Primary coverage for injuries or emergency sicknesses when traveling outside Home Country or Country of Permanent Residence up to a maximum of \$100,000 per person per trip
EMERGENCY MEDICAL EVACUATION BENEFIT	Up to a maximum of \$250,000 when traveling more than 300 miles away from Home
REPATRIATION OF REMAINS	Up to a maximum of \$250,000 when traveling more than 300 miles away from Home
SECURITY EVACUATION	Up to a maximum of \$250,000 when traveling outside of one's Home Country
NATURAL DISASTER EVACUATION	Up to a maximum of \$250,000 when traveling more than 300 miles away from Home (domestic or international travel)
ACCIDENTAL DEATH BENEFIT	Principal Sum of \$500,000 for accidental deaths occurred within 365 days of the date of the Covered Accident that resulted in death (Exposure & Disappearance Included)
ACCIDENTAL DISMEMBERMENT BENEFIT	Percentage of Principal Sum of \$500,000 for accidents incurred within 365 days from the date of the Covered Accident that resulted in a covered dismemberment or paralysis
BAGGAGE DELAY	If delayed for more than 24 hours: Up to a maximum of \$750 per day for up to 7 days (only 1 claim payable in any 12 consecutive month term)
TRIP INTERRUPTION BENEFIT	Up to a maximum of \$5,000 for trips of less than 90 days
PERSONAL PROPERTY (STOLEN GOODS)	Up to a maximum of \$3,000; Report must be filed within 48 hours of event to local authorities
EMERGENCY REUNION BENEFIT	Expenses for one family member to accompany the covered person prior to or after an Emergency Medical Evacuation; Up to a maximum of \$5,000
FAMILY REUNION BENEFIT	Expenses incurred to have one family member join the covered person at the hospital in event of a medical emergency for up to 7 days up to a maximum benefit of \$5,000